

Innovative asset tracking and geolocation solutions

Integrated asset tracking, geolocation and inventory management solutions to improve efficiency and reduce costs for a wide range of industry sectors



Our Solutions

Asset Tracking

Our Asset Tracking solution provides real-time location information on your assets from laptops and tools to reusable containers and any other mobile equipment. This means an accurate record of your assets is taken automatically, which reduces the time spent looking for assets and helps boost productivity. In addition, better asset utilisation can significantly reduce capital expenditure as often fewer equipment is needed.

With a choice of different technologies including RFID, Wifi, Bluetooth Low Energy (BLE) and others we offer a wide range of solutions to best suit your requirements and budget.



Tracking returnable transport items (RTIs)

Tracking the locations of your returnable/reusable transport Items can help you maximise the use of your assets and prevent them from getting lost or stolen.

We use radio frequency identification (RFID) technology to help improve the management of assets such as containers, tote boxes, roll cages, pallets or stillages.

Our specially designed RFiD Discovery system identifies individual pieces of equipment and tracks them throughout the supply chain and across different sites to ensure they are in place when and where they are needed.



Inventory management

Our warehouse inventory management solutions use RFID and other tracking technologies to automatically record the locations of individual stock items, boxes, or pallets, providing you with highly accurate real-time inventory information.

Benefits of our inventory management solutions include improved speed when locating assets and eliminating the need for time consuming manual stock checks, which can often be error prone. In addition, shipping errors can easily be avoided which can lead to increased sales and improved customer satisfaction.



Optimisation of operational processes

RFID Discovery makes it possible to locate key assets in your business at all times.

With this information, you can improve your operational efficiency and reduce costs. Other benefits include:

- Reduced time spent locating equipment
- Reduced rate of asset loss
- Optimisation of production methods and processes
- Optimising the use of equipment and resources
- Accurate record of quality & maintenance procedures for compliance



Order checking and reconciliation

RFID Discovery allows the contents of a box to be automatically cross checked against a packing list and validated instantly using RFID technology.

The system identifies products with RFID labels by comparing them with the data on the purchase order stored in the ERP system.

This helps to ensure that an order is complete and correct before its departure, avoiding manual checks and picking errors. This not saves time but avoids mistakes which can affect customer satisfaction and require lengthy returns procedures to correct at a later stage.



Tracking uniforms and PPE

Our RFID system is used to help track and locate employee uniforms as well as reusable personal protective equipment (PPE).

Equipped with an RFID tag, each item can be tracked between the sites where it is used and those of service providers such as the laundry or repair centre. Being able to see the location of each item allows you to manage your stock effectively, ensuring there are always sufficient items available where required. In addition, it helps save time by eliminating manual stock checks as well as reducing losses and therefore costs.



Technologies used

As a systems integrator we use our expertise of different hardware and software technologies to create a solution that suits your requirements. We work with carefully selected partners to provide different technologies including:

- Passive RFID (UHF, HF, NFC)
- Active Wi-Fi based RFID
- Non-wifi RFID
- Bluetooth Low Energy (BLE)
- Ultra-Wideband (UWB)
- GPS
- and many more

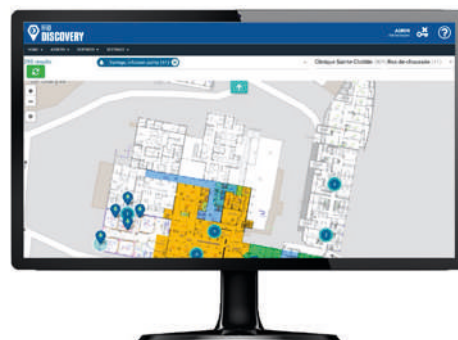


Flexible solutions

Our proven tracking solutions are totally flexible and range from simply supplying tags, labels or label printers to completely integrated track and trace systems.



We support you all the way from initial consultation and site survey through to implementation and ongoing management to ensure maximum benefits are achieved and possible pitfalls avoided.



Why choose RFiD Discovery?

RFiD Discovery is part of Paragon ID, a global leader in identification solutions.

Used in a growing number of organisations across the UK and worldwide for over 15 years, RFiD Discovery offers integrated tracking solutions to help increase efficiency, save time, improve safety and cut costs. Our wide choice of tracking technologies include active and passive RFID, Bluetooth Low Energy (BLE), UWB, Wi-Fi, GPS and many others to suit your accuracy and budget requirements.

Paragon ID is the largest manufacturer of passive RFID labels in Europe and is accredited to ISO 9001, ISO 14,001, ISO 27,001 and ISO 50,001.



Industry
Partner

